

Gateway Cities Ranked by Population Density

<http://www.energyatlas.ucla.edu/profiles/BTU>

Footnotes:

(1) Cities include for comparison purposes (Population from 2010 Census)
 (2) Values obtained from EnergyAtlas (Population from 2010 Census) - EnergyAtlas provides disaggregated energy data developed by the UCLA California Center for Sustainable Communities (CCSC) and funded by the SoCalREN and the County of Los Angeles' Office of Sustainability.

City Name	Population Density per Square Mile ²	
New York ¹	27,016	
Maywood	23,257	
Huntington Park	19,820	
Cudahy	19,371	
San Francisco ¹	17,116	
Bell Gardens	17,066	
Hawaiian Gardens	15,556	
Lynwood	14,599	
Bell	13,414	
South Gate	12,839	
Bellflower	12,393	
Paramount	11,223	
Norwalk	10,896	
Artesia	10,190	
Compton	9,604	
Long Beach	8,995	
Downey	8,894	
Lakewood	8,325	
Los Angeles ¹	8,008	
Montebello	7,454	
Los Angeles County	7,372	
Pico Rivera	7,211	
La Mirada	6,183	
Whittier	5,866	
Cerritos	5,540	
Signal Hill	5,039	
Santa Fe Springs	2,268	
Commerce	2,008	
Avalon	1,237	
Industry	1,178	
Vernon	22	

Gateway Cities - Designated Opportunity Zones

LEGEND

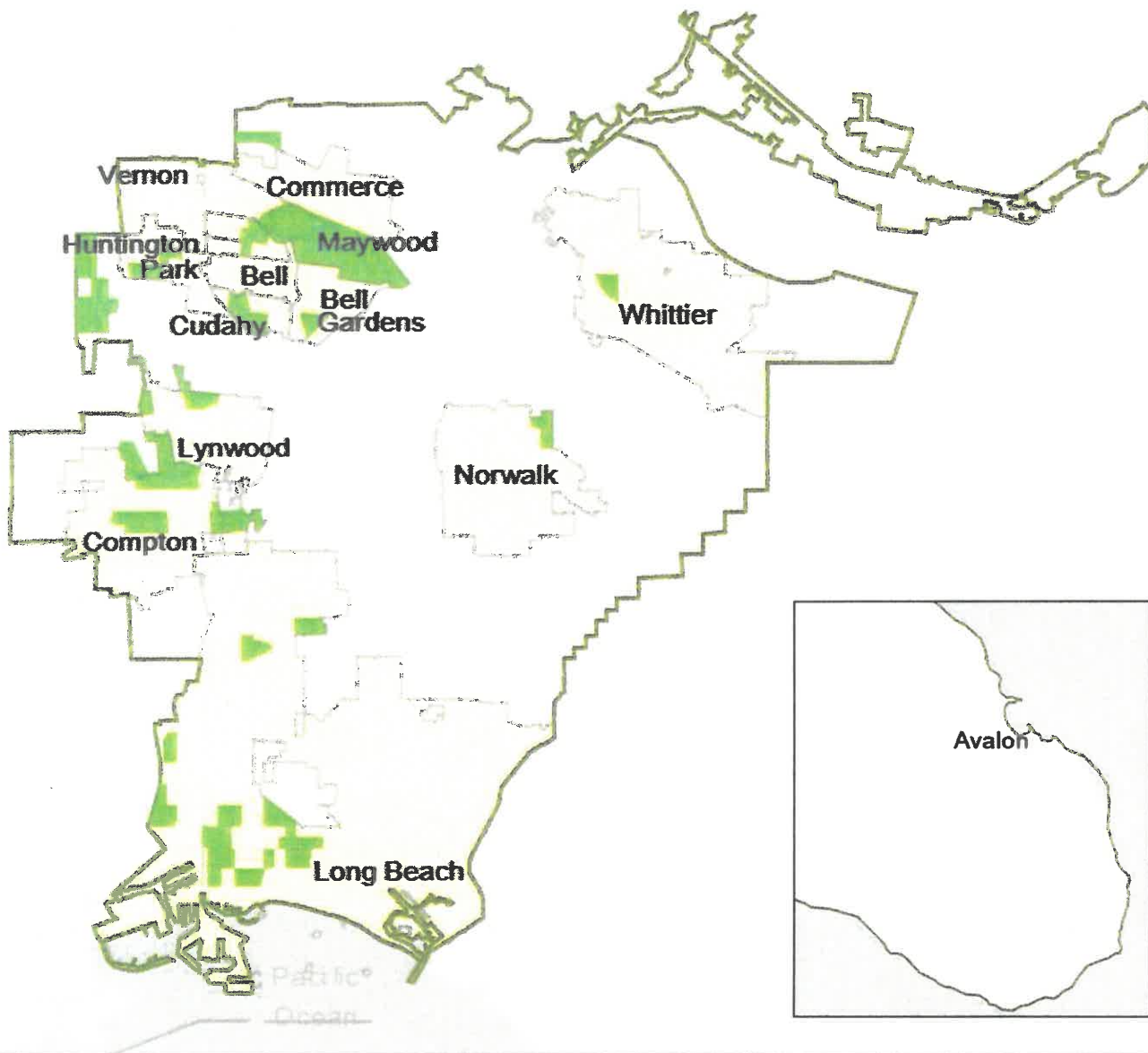
Opportunity Zones (census tracts)



GCCOG Boundary



GCCOG City Boundaries



The California Department of Finance designates certain census tracts as Opportunity Zones, where investments made by individuals through special funds would be allowed to defer or eliminate federal taxes on capital gains.

If one census tract in a Gateway City was designated as an Opportunity Zone, then the whole City is highlighted in this map.